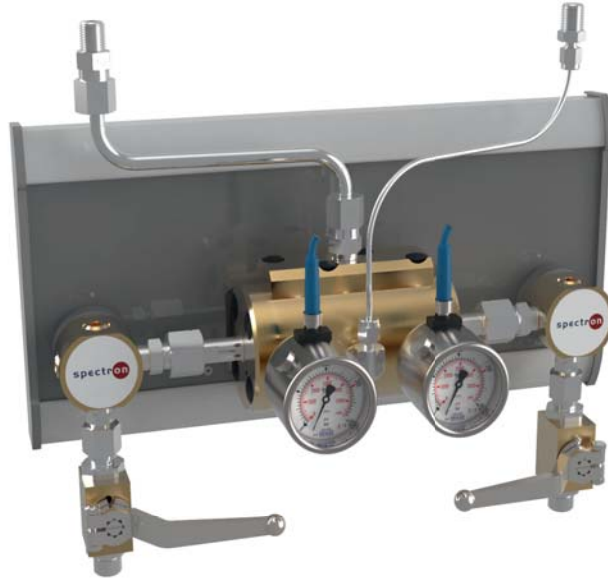


Ambimat for Pressure control panel BM65-1-AC

spectron lab



BM-2A-K-V-C2H2

Product features

- Ambimat for acetylene pressure control panel BM65-1-AC for fully automatic change-over.
- Minimised pressure difference between left and right hand side outlet pressure.
- Maximum emptying of gas cylinders
- Designed for easy installation
- Compact design especially for installation into safety cabinets for gas cylinders

Technical data

Inlet pressure P_1 max. 25 bar

Change-over P_U ca. 3 bar

Materials

Body: brass
pipes: stainless steel

Inlets M16x1,5

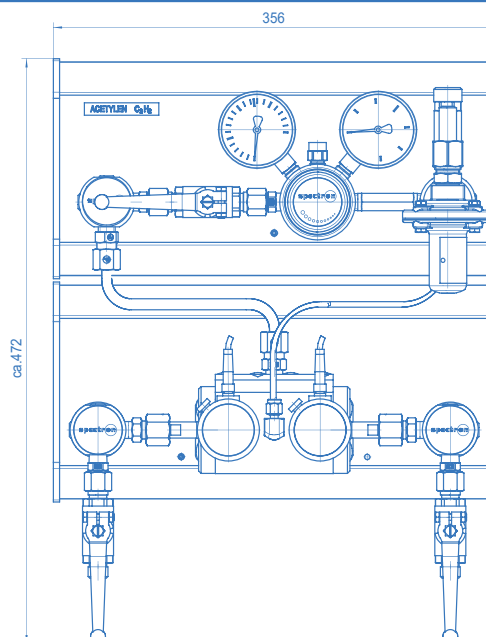
Temperature range -20 to +60°C

Leak rate $\leq 10^{-4}$ mbar l/s He

Weight ca. 9 kg

Example:

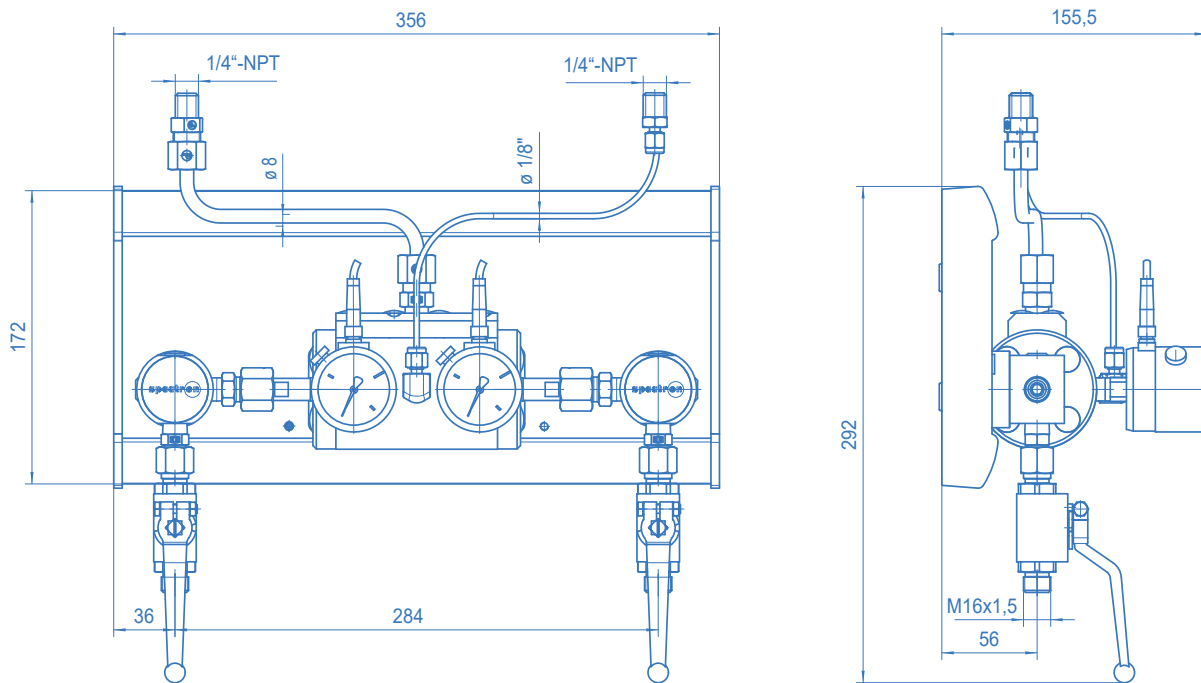
BM65-2A-K-V-KH-C2H2



Ambimat for Pressure control panel BM65-1-AC

spectro lab

Dimensions and connections



Ordering information: Ambimat

BM - 2A - K - V - C2H2

Inlet pressure indication

M pressure gauge
K contact pressure gauge

Single shut-off

0 without single shut-off
V with ball valve for each cylinder